



Call for Partnerships

2026



Law for Climate Action Programme

Why the law matters for climate action

Climate change is rapidly reshaping legal systems around the world. Courts, regulators, legislators and corporate decision-makers are increasingly confronted with climate-related questions that existing legal frameworks were not designed to address. At the same time, political, economic and cultural pressures are creating uncertainty and resistance around climate action, placing law under growing strain.

Across jurisdictions and sectors, legal professionals face a shared challenge: how to interpret, apply and evolve the law in ways that support credible, effective and legitimate climate action. Climate litigation is accelerating, regulatory expectations are shifting, and new risks are emerging for governments, companies and directors. Yet

in many areas of legal practice, there remains limited clarity about obligations, liabilities and opportunities.

The Centre for Climate Engagement (CCE) exists to meet this challenge. As part of Hughes Hall's Law Strategy and one of the College's Bridge Initiatives, CCE connects world-class research on climate law and policy with the people responsible for legal decision-making in practice. The Law for Climate Action Programme is the engine through which CCE supports lawyers, policymakers, regulators and corporate leaders to navigate complexity, strengthen legal foundations for climate action, and shape the systems that govern climate outcomes.

But this work is at risk. CCE's current funding runs only until August 2026, and full delivery of the 2025–2028 strategy requires £700,000 per year, of which the Law Programme is a core pillar. New partnerships are now essential to secure and expand this work.

“Climate change is no longer a specialist legal issue – it now touches almost every area of law. Our Law for Climate Action Programme exists to help lawyers, policymakers and decision-makers understand what this means in practice, and how existing legal frameworks can be used, strengthened or reinterpreted to accelerate real-world climate action.”

*Dr Paul Jefferiss, Director,
Centre for Climate Engagement*



The opportunity

The Law for Climate Action Programme aims to increase the scope, reach and impact of CCE's legal work, ensuring that law becomes a driver — rather than a barrier — to climate action.

Over the next three years, the programme will focus on:

- Strengthening the integration of climate considerations across core areas of law, from corporate governance and finance to planning, procurement and public law.
- Providing legal professionals, policymakers and corporate leaders with credible, practical guidance grounded in rigorous academic research.
- Addressing emerging and under-examined legal challenges, including fiduciary duties, climate-related financial reporting, state-owned enterprises, and the governance implications of AI.
- Creating shared understanding across jurisdictions through comparative analysis and accessible legal resources.
- Building legal capacity and confidence at a time of heightened political scrutiny, litigation risk and regulatory change.

These objectives align with CCE's wider strategy, which recognises that effective climate governance depends on strong legal foundations working in concert with policy, organisational culture and public legitimacy.

Our flagship project: the Law and Climate Atlas

At the heart of the Law for Climate Action Programme sits CCE's flagship initiative: the Law & Climate Atlas.

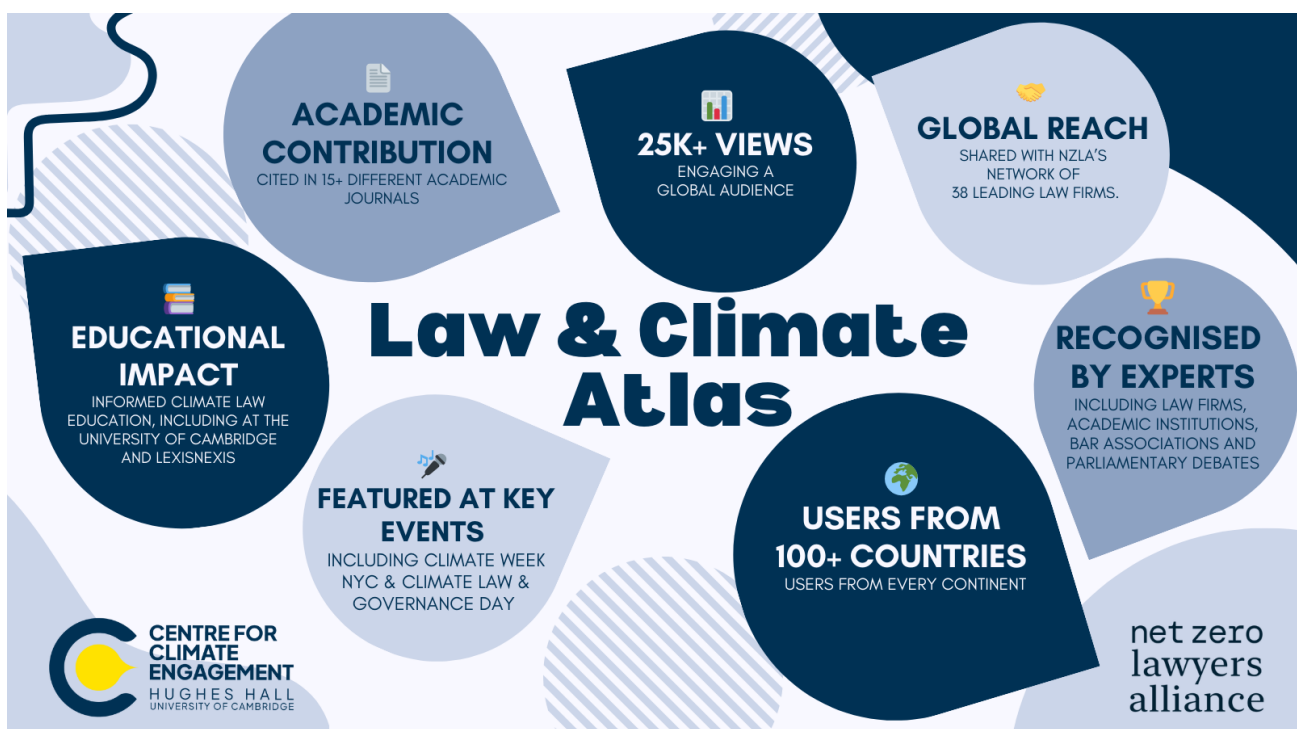
Developed in partnership with the Net Zero Lawyers Alliance, the Atlas provides clear, accessible overviews of how climate change intersects with more than 40 areas of law. It is designed to support lawyers, policymakers and decision-makers who need to understand climate relevance beyond traditional environmental law.

The Atlas has already become a widely used global resource, accessed by users in over 100 countries and integrated into legal training, academic teaching, professional guidance and policy debate.

CCE now proposes a significant expansion of the Atlas:

- Following recent expansions into the EU and Brazil, extend coverage into new jurisdictions.
- Enhancing comparability across legal systems to support cross-border analysis and learning.
- Expanding thematic coverage, including voluntary standards, corporate governance, procurement and climate-related financial regulation.
- Improving functionality and accessibility to support legal research, practice and education.
- Strengthening partnerships to ensure the Atlas continues to inform professional practice at scale.

As a flagship project, the Law & Climate Atlas represents a core partnership opportunity: a globally relevant, open-access resource that translates legal complexity into practical climate governance insight.



Our broader policy programme: advancing legal foundations for climate action

Beyond the Atlas, the Law for Climate Action Programme addresses a suite of interconnected legal challenges that directly shape climate outcomes.

1. Corporate governance, fiduciary duties and accountability

CCE undertakes legal analysis on directors' duties, investor obligations and corporate accountability, helping clarify how climate considerations intersect with existing governance frameworks. This work supports boards, investors and regulators navigating evolving expectations around risk, disclosure and responsibility.

2. Climate, accounting and financial reporting

Through work on "true and fair" accounting and sustainability reporting, CCE examines how legal and accounting standards can better reflect climate-related impacts, risks and dependencies – strengthening the integrity of financial decision-making.

3. State-owned enterprises and public ownership

State-owned enterprises are among the world's largest emitters, yet remain under-examined in climate law. CCE's research explores how public ownership, corporate law, human rights and international obligations intersect to shape climate responsibilities in these entities.

4. Planning, procurement and supply chains

CCE analyses how legal frameworks governing planning, procurement and contracting can be used to drive emissions reductions and resilience across public and private supply chains.

5. Emerging challenges: AI and climate law

As AI reshapes economies and governance, CCE examines the legal and regulatory implications of AI for climate mitigation, adaptation and environmental risk.

Together, these strands form a coherent programme that strengthens legal systems' capacity to respond to climate change.

How we work

The Law for Climate Action Programme reflects CCE's institutional theory of change. We:

Connect academic researchers and legal practitioners across jurisdictions and sectors.

Create legal analysis, tools and frameworks that respond to real-world needs.

Convene trusted spaces for dialogue through roundtables, workshops and seminar series.

Communicate insights through open-access resources, briefings and targeted guidance.

Build capacity, supporting legal professionals, policymakers and future leaders to apply climate considerations confidently in their work.

This approach ensures that legal research is not only produced, but actively used, tested and embedded in practice.

Impact to date

CCE's Law for Climate Action Programme has strengthened how climate considerations are understood and applied across legal practice, corporate governance and public policy. Our work has influenced professional guidance, legislative debate, education and decision-making in the UK and internationally.

1. Mainstreaming climate considerations across legal practice

Through the Law & Climate Atlas, CCE has reshaped how lawyers across disciplines understand the relevance of climate change to their work. The Atlas has received more than 25,000 views from users in over 100 countries and is now a core resource of the Net Zero Lawyers Alliance, reaching 38 leading global law firms. It is widely used in professional training and academic teaching, helping normalise climate considerations beyond environmental and energy law.

Outcome: Climate risk and responsibility are increasingly embedded across diverse areas of legal practice.

2. Influencing climate law and policy design

CCE's legal analysis has informed climate policymaking at national and international levels. Our consultation responses and briefings have been cited in UK parliamentary reports, government responses to green taxonomy consultations, and UN Special Rapporteur reports, demonstrating the Centre's ability to translate legal scholarship into policy-relevant insight.

Outcome: CCE's legal expertise is shaping how governments design and interpret climate-related law and policy.

3. Strengthening Corporate Climate Governance and Fiduciary Practice

CCE's work on directors' duties, fiduciary obligations and accounting standards, including contributions to the True & Fair Project, has clarified how climate risks should be reflected in

corporate governance and financial reporting. This research has informed guidance for investors and board directors and has been incorporated into climate governance resources used by organisations such as Chapter Zero and the Climate Governance Initiative.

Outcome: Climate considerations are increasingly recognised as integral to fiduciary duty and financial integrity.

4. Shaping Professional Standards, Guidance and Education

CCE's outputs are integrated into professional guidance and education, including training delivered by LexisNexis, resources developed by The Chancery Lane Project, and teaching within the University of Cambridge and partner institutions. CCE's work is also referenced by professional bodies such as the Law Society and the International Bar Association.

Outcome: Climate literacy is becoming embedded in legal education and professional norms.

5. Enabling Strategic Action Across Law, Business and Civil Society

By synthesising complex legal developments into accessible guidance, CCE supports law firms, in-house counsel, investors, policymakers and civil society organisations to act on climate change. This includes strengthening governance practice, supporting advocacy, and providing an evidence base for reform and litigation.

Outcome: A wider range of actors are better equipped to use law as a lever for climate action.

Together, these impacts demonstrate how the Law for Climate Action Programme moves beyond convening and research to deliver tangible shifts in understanding, practice and policy, helping align legal systems with climate goals at scale.

Why partner with CCE

Partnering with CCE is an opportunity to invest in the legal systems that underpin climate action. Few organisations combine CCE's access to world-leading academic expertise with deep engagement in legal practice and policy-making.

As part of Hughes Hall and the University of Cambridge, CCE draws on cutting-edge research across law, governance and climate policy. As a neutral convenor, it provides a trusted space for evidence-based discussion free from partisan or commercial agendas.

For partners, supporting the Law for Climate Action Programme means backing an organisation with a proven ability to:

- Translate complex legal research into practical guidance.
- Influence climate governance at national and international levels.
- Equip legal professionals with tools that reduce risk and uncertainty.
- Scale solutions globally through trusted networks.
- Strengthen the legitimacy and effectiveness of climate action through law.

Partnership is therefore not only philanthropic support, but a strategic investment in legal capacity for climate action.

Partner benefits

- Strategic engagement with CCE leadership and the Law for Climate Action Programme
- Visibility across programme outputs, legal resources and events
- Inclusion in national and international dissemination activities
- Opportunities to co-curate legal roundtables and consultations
- Tailored impact reporting on how support drives change
- Early insight into emerging climate-legal issues and research

What your support enables

Your support enables the Law for Climate Action Programme to deliver practical, evidence-based work that strengthens the legal foundations of climate action. It ensures that legal insight is translated into guidance, tools and engagement that decision-makers can use with confidence.

In practice, partnership funding enables CCE to expand and enhance the **Law & Climate Atlas**, extending coverage to new jurisdictions and areas of law, improving comparability across legal systems, and strengthening accessibility for practitioners, policymakers and educators. The Atlas remains a trusted, open-access resource supporting climate-aligned legal practice worldwide.

Support also enables the production of **timely legal analysis and briefings** on emerging climate-law issues, including litigation, regulation, corporate governance, fiduciary duties and climate-related financial reporting. These outputs provide clarity in fast-moving legal environments and support confident decision-making.

Partnership funding allows CCE to **convene high-level legal dialogues**, including roundtables, workshops and seminars that bring together lawyers, judges, academics, regulators and business leaders. These forums support shared learning and the development of coherent responses to complex climate-legal challenges.

Support further enables **capacity building and education** across the legal profession through engagement with Cambridge teaching programmes, postdoctoral research, internships and practitioner-focused events, embedding climate-aware legal thinking for the long term.

Finally, partnership support sustains the **core expertise and infrastructure** required to deliver this work, including specialist staff, research translation, engagement and programme coordination. This flexible capacity allows the Law Programme to respond rapidly to legal, policy and governance developments.

The Law for Climate Action Programme is a central pillar of CCE's wider strategy, which requires £700,000 per year to deliver in full. Programme-level support of approximately £250,000 per year ensures this work remains credible, responsive and scalable at a critical moment for climate law.

Contact

To explore partnership opportunities, please contact:

Nick Scott,

Manager (Law & Climate Change)

Email: nps32@hughes.cam.ac.uk

Centre for Climate Engagement

Hughes Hall,

University of Cambridge,

CB1 2EW

Email: climate@hughes.cam.ac.uk

Website: climatehughes.org

Linked In: @Centre for Climate Engagement

Blue Sky: @ClimateHughes