

Law and Climate Atlas

Strengthening the legal
foundations of net zero
and climate resilience



Partner Project Proposal

Why this moment matters

Climate change is now reshaping economies, societies and governance systems, and with it the law. From company law and finance to planning, human rights, criminal justice and intellectual property, climate considerations increasingly affect how legal decisions are made. Yet for much of the legal profession, the implications of climate change remain fragmented, opaque or confined to specialist practice areas.

This gap has real consequences. Lawyers advise boards, structure transactions, draft legislation, interpret regulatory obligations and influence dispute outcomes. When climate change is not clearly understood within these processes, opportunities for effective climate action are missed and legal risk is misunderstood or mispriced.

At the same time, demand for practical, credible climate guidance within the legal

profession is growing rapidly. Law firms, in-house teams, educators and professional bodies are seeking ways to understand how climate change affects their work, without requiring lawyers to become climate specialists.

The Law & Climate Atlas, developed by the Centre for Climate Engagement (CCE) in partnership with the Net Zero Lawyers Alliance (NZLA), responds directly to this need. It is the first global resource designed to map how climate change intersects with every area of law, across jurisdictions and legal systems.

By supporting the next phase of the Atlas, partners have an opportunity to strengthen climate capability across the legal profession at a moment when law is central to delivering or delaying climate action.

The Law & Climate Atlas is the flagship project of the Centre for Climate Engagement's Law for Climate Action Programme. The Programme sits within CCE's wider mission to translate academic research into practical tools that strengthen climate governance, policy and decision-making worldwide.

“Climate change is no longer a niche concern for environmental lawyers — it is reshaping legal practice across the board. The Law & Climate Atlas exists to give lawyers clarity, confidence and credible guidance on how climate issues intersect with their work, and how the law can support effective climate action.”

*Dr Paul Jefferiss, Director,
Centre for Climate Engagement*



The Law & Climate Atlas

The Law & Climate Atlas is a free, publicly accessible platform developed by CCE to translate complex climate–law interactions into clear, practitioner-focused guidance.

Each Atlas entry provides a concise overview of:

- how climate change affects a particular legal field
- how that area of law is being used to address climate challenges
- key cases, legislation and regulatory developments
- practical implications for lawyers working in that area

Rather than advocating for specific reforms, the Atlas analyses how climate change interacts with existing legal frameworks, while also highlighting the potential implications of emerging or proposed legal developments. Content is rigorously researched, reviewed by subject-matter experts, and written in accessible language suitable for practitioners, educators and students.

The Atlas is available through a public website and via the NZLA members' portal, ensuring wide reach across legal practice and education.

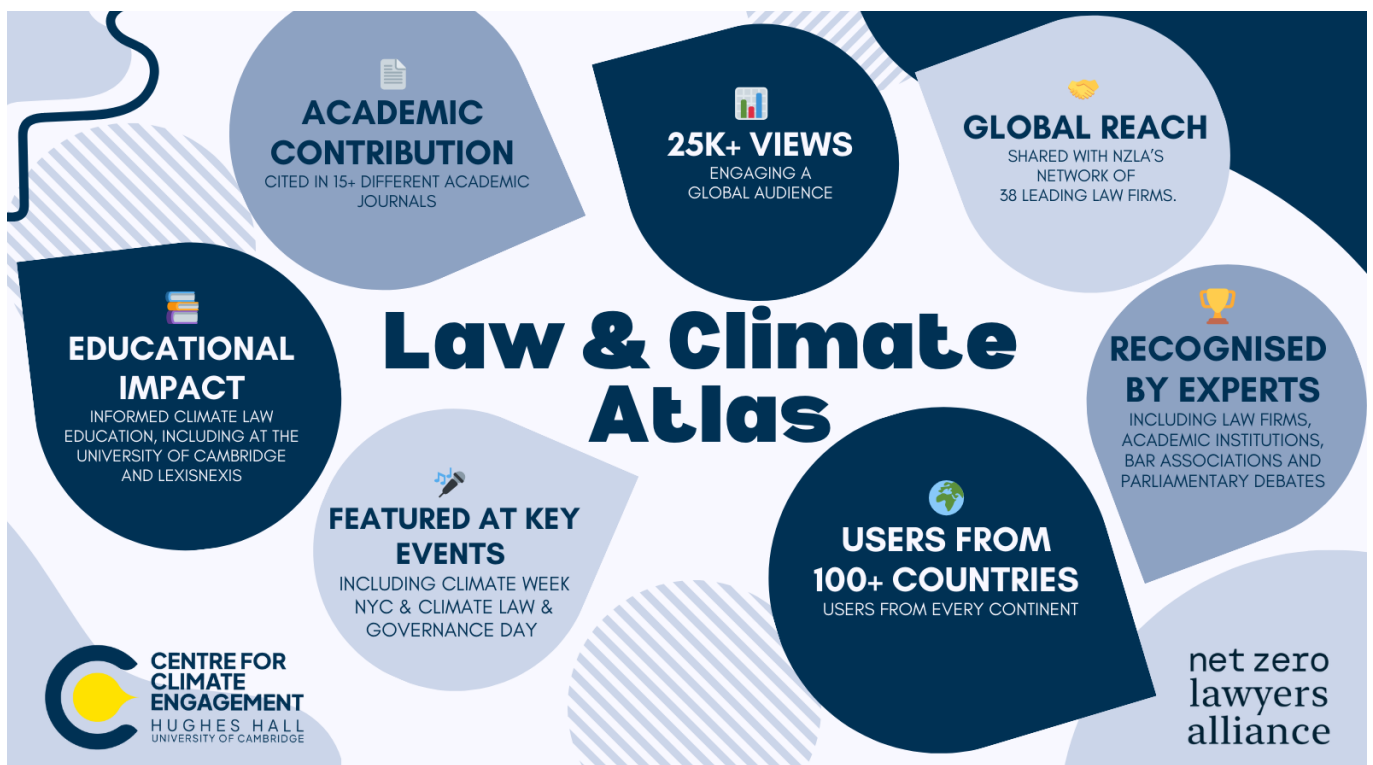
The screenshot shows the website's header with the Centre for Climate Engagement logo and navigation links: ATLAS HOME, LAW & CLIMATE ATLAS, RESOURCES & GLOSSARY, ACKNOWLEDGEMENTS, and CCE HOME. The main heading is "Law and Climate Atlas". Below this, there are two columns of text. The left column describes the Atlas's purpose and development, while the right column explains the content's focus and provides contact information. Below the text are four filter dropdown menus: "Filter by type" (All types), "Filter by legal theme" (All legal themes), "Filter by climate theme" (All climate themes), and "Filter by Country" (All Countries). At the bottom, there are four icons: a Brazilian flag with a building icon, a UK flag with a building icon, an American flag with a trophy icon, and a Brazilian flag with a trophy icon.

Impact

Since its launch in late 2022, the Law & Climate Atlas has demonstrated strong uptake and influence across the legal ecosystem.

The Atlas has received more than 25,000 views from users in over 100 countries and is now a core resource for the Net Zero Lawyers Alliance, providing access to 38 leading global law firms. It has been praised by law firms, academic institutions and bar associations, referenced in parliamentary debates, and highlighted at major events including Climate Week NYC and Climate Law and Governance Day.

The Atlas is also being used directly in legal education and professional training, including by the University of Cambridge, LexisNexis and The Chancery Lane Project. In addition, it has been cited in more than fifteen academic articles, demonstrating its credibility as both a practitioner and research resource.



The opportunity

The Atlas currently covers over 50 areas of law across four jurisdictions: the United Kingdom, the United States, the European Union and Brazil. While this represents a significant foundation, demand for expansion is growing – from legal practitioners, educators and policymakers seeking guidance in other jurisdictions and legal systems.

The next phase of the project focuses on three priorities.

First, expanding geographic coverage. Over a two-year period, CCE aims to add at least three additional jurisdictions, with a focus on legal systems not yet represented in the Atlas. The ambition is for the Atlas to cover law in every continent by 2027, reflecting the global nature of climate risk and legal response.

Second, enhancing the platform itself. As the volume of content grows, CCE will invest in improving how information is sourced, presented and updated. This includes developing clearer visualisations of legal trends, enabling comparison across jurisdictions, and exploring the use of AI tools to track significant legal developments and support more frequent updates.

Third, amplifying impact through education and engagement. Building on existing uptake, CCE will work to integrate Atlas insights into legal training platforms and develop practice-focused outputs that can be used by law firms, in-house teams and educators.

Together, these developments will ensure that the Atlas remains current, credible and widely used as climate law continues to evolve.

What the atlas will deliver

Over its next phase, the Law & Climate Atlas project will deliver a step change in how climate-related legal knowledge is created, shared and used across the legal profession.

The project will substantially **expand the geographic reach** of the Atlas, adding new jurisdictions that reflect a wider range of legal systems, governance models and climate contexts. This expansion will ensure that the Atlas speaks not only to lawyers in established common-law jurisdictions, but also to practitioners working in civil-law systems and emerging economies where climate impacts and legal responses are evolving rapidly.

Alongside geographic expansion, the project will **deepen and update coverage across legal practice areas**. As climate law develops quickly through legislation, litigation and regulation, Atlas content will be refreshed and extended to remain accurate, relevant and trusted. This ensures the Atlas remains a living resource rather than a static snapshot.

The project will also deliver **significant improvements to the Atlas platform itself**. These include clearer navigation, improved visualisation of legal trends, and enhanced comparative functionality, allowing users to

explore how climate-related legal issues are addressed across jurisdictions. As part of this work, CCE will explore the responsible use of AI-enabled tools to support monitoring of legal developments and more regular content updates.

Crucially, the next phase will strengthen the Atlas's role as a **tool for education and professional practice**. CCE will work with law firms, professional training providers and academic institutions to translate Atlas content into formats that can be embedded directly into training programmes, continuing professional development and legal education. This will ensure that the insights generated by the Atlas are not only accessible, but actively used.

Taken together, these developments will consolidate the Law & Climate Atlas as the leading global reference point for understanding how climate change intersects with law — and how legal practice can support climate-aligned decision-making.

Outputs

Over the next phase, the Law & Climate Atlas project will deliver a defined set of outputs that translate investment into durable, widely used resources for the legal profession.

Expanded Atlas Content

The project will deliver new and updated Atlas entries covering additional legal practice areas and jurisdictions. Each entry will provide clear, practitioner-focused analysis of how climate change intersects with a specific area of law, supported by authoritative sources and expert review. This will significantly extend the breadth and depth of the Atlas as a global reference resource.

New Jurisdictional Coverage

The Atlas will expand to include at least three additional jurisdictions, reflecting different legal systems and climate governance contexts. This will ensure the resource is relevant to a wider global audience and better reflects the international nature of climate risk and legal response.

Enhanced Digital Platform

The project will deliver improvements to the Atlas platform, including clearer navigation, improved presentation of legal trends, and enhanced functionality for comparing how climate-related legal issues are addressed across jurisdictions. These improvements will increase usability for practitioners, educators and students.

Regularly Updated Content

As climate law continues to evolve rapidly, the project will establish processes for more frequent content updates. This ensures that the Atlas remains current, credible and trusted by professional users.

Education- and Practice-Ready Resources

Atlas content will be adapted into formats suitable for professional training, continuing legal education and academic teaching. This includes materials that can be integrated into law firm training programmes and university courses, supporting long-term capacity building within the profession.

Dissemination and Reach

The project will deliver structured dissemination through legal networks, professional bodies and events, ensuring that new content reaches practitioners globally. This includes integration within the Net Zero Lawyers Alliance platform and targeted outreach to educators and policy audiences.

Why partner with CCE

Partnering with the Centre for Climate Engagement on the Law & Climate Atlas is an opportunity to support systemic change in one of the most influential professions shaping climate outcomes.

CCE is uniquely positioned to deliver this project. Embedded within Hughes Hall and the University of Cambridge, the Centre combines academic rigour with a clear mandate to translate research into real-world impact. Its Law for Climate Action Programme sits at the intersection of legal scholarship, professional practice and policy engagement, enabling it to produce resources that are both credible and widely adopted.

CCE's partnership with the Net Zero Lawyers Alliance provides unparalleled access to the global legal profession, ensuring that the Atlas is shaped by practitioner needs and reaches those in positions to influence decisions across business, finance, government and civil society. At the same time, CCE's independence and non-advocacy approach allow it to maintain trust across jurisdictions, legal traditions and professional communities.

For partners, supporting the Law & Climate Atlas means contributing to a high-impact public good that strengthens climate capability across the legal ecosystem. It offers the opportunity to demonstrate leadership in climate governance, support professional standards that reflect climate reality, and help equip lawyers worldwide with the understanding they need to advise responsibly in a rapidly changing world.

Partnership also offers meaningful engagement: partners gain visibility across Atlas outputs and events, insight into emerging climate-law trends, and association with a project that is shaping how law is practised, taught and understood globally.

In short, partnering with CCE on the Law & Climate Atlas is an investment in the quality, consistency and effectiveness of climate-related legal decision-making, at a moment when the law is central to delivering the net zero transition.

Investment requirements and partner benefits

Investment requirements

The Law & Climate Atlas is a growing global public resource, and its continued credibility and impact depend on sustained, high-quality development. Partnership investment supports a defined next phase of the project, focused on expanding coverage, strengthening the platform and embedding the Atlas more deeply in legal practice and education.

Funding enables CCE to commission and review new jurisdictional content, update existing material as law evolves, and maintain the rigorous editorial standards that make the Atlas trusted by practitioners. It also supports platform development, education-ready outputs and structured dissemination through global legal networks.

Investment is sought on a multi-year basis, reflecting the Atlas's role as long-term professional infrastructure rather than a one-off publication. This approach allows CCE to plan responsibly, maintain independence, and ensure the resource remains current, accessible and globally relevant.

Partner benefits

Partners in the Law & Climate Atlas support a project that is shaping how climate change is understood and addressed across the legal profession worldwide. Partnership offers meaningful engagement without compromising the independence or public-interest nature of the resource. Partners benefit from:

- **Association with a high-impact global public good**, developed by the University of Cambridge and used by legal professionals across jurisdictions
- **Recognition as an enabling partner** across Atlas materials and communications, in a manner appropriate to professional and academic standards
- **Early insight into emerging climate-law developments**, through engagement with the Atlas team and related programme activity
- **Opportunities to contribute expertise or perspective** to the project's evolution, where appropriate, without influencing content independence
- **Visibility within global legal and climate governance networks**, including those connected to the Net Zero Lawyers Alliance

Above all, partnership offers the opportunity to play a constructive role in strengthening professional standards, improving legal understanding of climate risk, and supporting more effective climate-aligned decision-making across the legal system. Through the Atlas, partners also contribute to CCE's wider Law for Climate Action Programme, ensuring that project-level insight feeds into broader legal research, education and policy engagement.

Contact

To explore partnership opportunities, please contact:

Nick Scott,

Manager (Law & Climate Change)

Email: nps32@hughes.cam.ac.uk

Centre for Climate Engagement

Hughes Hall,

University of Cambridge,

CB1 2EW

Email: climate@hughes.cam.ac.uk

Website: climatehughes.org

Linked In: @Centre for Climate Engagement

Blue Sky: @ClimateHughes